

Installation instruction do88 performance Intercooler Volvo V40 2013->

Part number: ICM-250

This instruction shows how to replace the OEM intercooler with do88 performance intercooler kit.

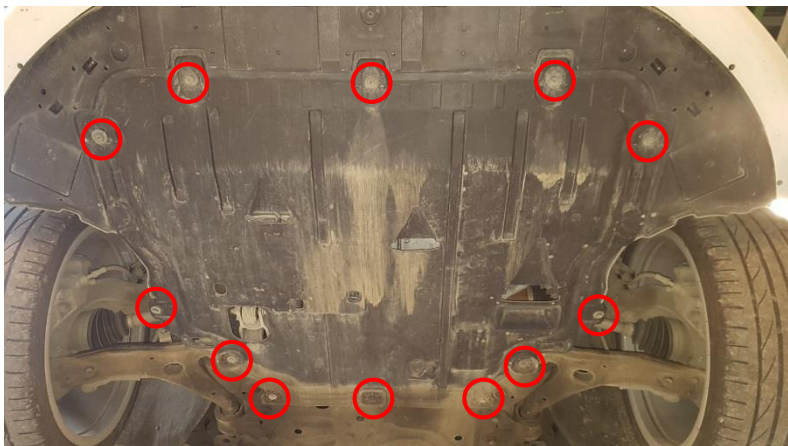
At this type of installation we always recommend that you have mechanical experience and knowledge about safety during work on vehicles.

Parts included:

1. Performance intercooler
2. Intercooler inlet silicone hose (only included MY 15->)
3. Intercooler outlet silicone hose (only included MY 15->)
4. 2pcs Brackets
5. Sensor block-off plate with o-ring
6. Sealing
7. Screws nuts and washers:
 - 2pcs M8x20 Screws
 - 2pcs M10x25 Screws
 - 2pcs M10 Nylon lock nuts
 - 2pcs M10 Washers
 - 4pcs M5x10 Screws
 - 1pc 4mm Silicone cap



1. Remove the plastic cover underneath the engine 12pcs T30 Torx.



2. In the lower edge of the bumper remove 3pcs plastic rivets. Press both the plastic tabs towards the middle and then gently pull it out in its collar.



3. In the wheel arch on both sides, remove 6pcs Torx T25.



4. Remove the little plastic inspection cover in the front right corner of the bumper bottom cover. Pry with a flat screw driver.



5.

Inside the right wheel arch behind the inner fender you need to disconnect the hoses for the head light washers (if your car is equipped with this).

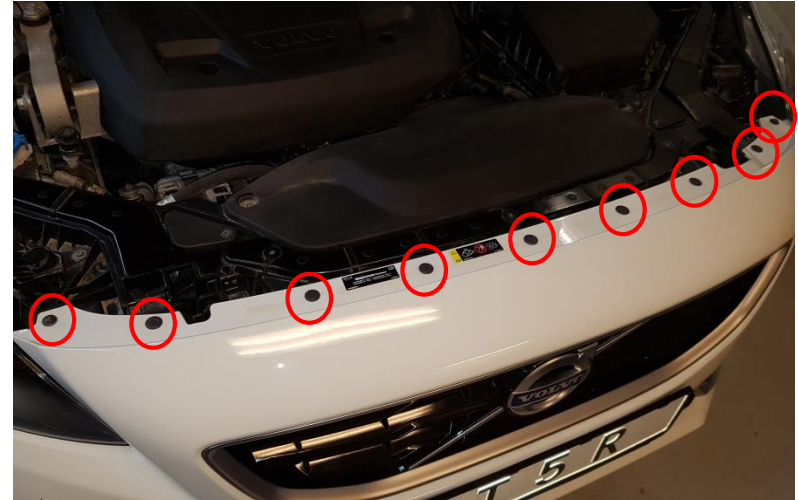
Gently push the white plastic sleeve towards the pump until it moves then gently pull the connection loose.

Seal the connections on the pump with the included silicone caps to prevent leakage.



6.

Remove the 7 plastic rivets on top of the bumper by pushing the middle part down and then pull rivet up by its collar. Also remove the 2pcs Torx T25.



7.

On both sides behind the inner fenders pry the bumper plastic over the plastic clip edge.



8.

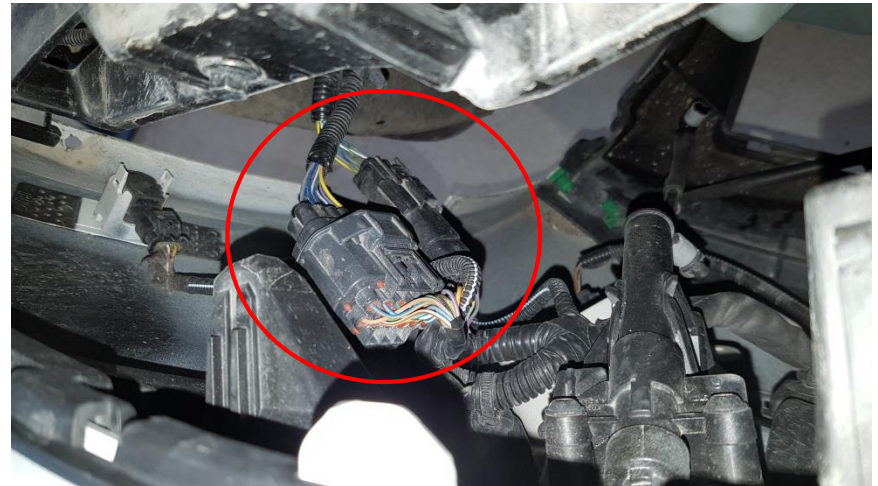
This step should be performed with the help of an assistant.

On both sides, pull the bumper cover out from the fender to loosen the plastic clips that holds it in place.

Remove the bumper cover from vehicle by gently pulling it straight forward from car until it comes loose from clips.

Once the bumper is about 15cm out from the car, disconnect the two large cable connector located in the front right inner corner of the bumper.

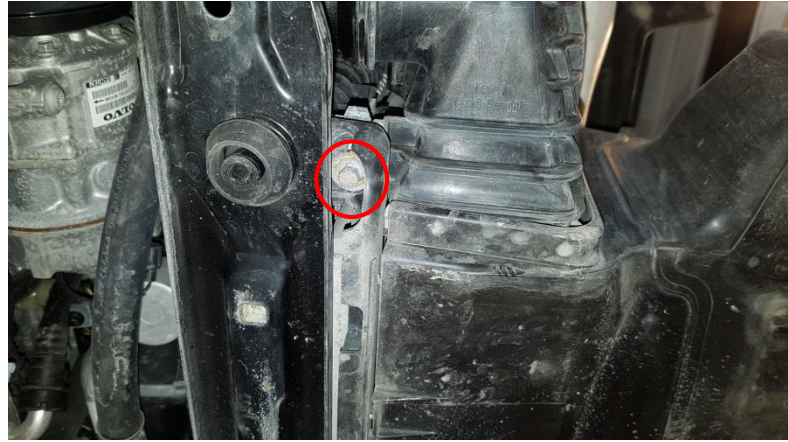
Now remove the bumper from the car.



9. Disconnect the inlet and outlet intercooler hoses. On MY 2015-> remove the hoses from the car.



10. Remove 2pcs Hex 8mm from the bottom of the intercooler.



11. Pry the three plastic tabs for the air guide loose with a flat screw driver.



12. Now remove the intercooler from the car together with its air guide.

Note: If your car has a sensor on any of the intercooler connections then disconnect its cable connector before removing the intercooler from the car.

- 13.** Install the included brackets according to picture. Use the included M10 screws, washers and nuts.
Do not tighten the nuts yet, the brackets needs to be loose.



(Step 14 Diesel models)



- 14.** Now prepare the sensor connections.

Petrol models:

If your car has sensor in the OEM intercooler. Install it in the do88 intercooler with the included M5x10 screw. If your car has no sensor install the included block-off plate.

Diesel models:

Install the included block-off plate on the right side connection with the included M5x10 screw. The left side sensor connections needs to be drilled:
Place the core on a flat surface with the hose connections pointing downwards. Drill all the way through the tank wall in the pre-drilled $\text{\O}5\text{mm}$ hole with a $\text{\O}12\text{mm}$ drill (drill carefully and straight). We recommend to run a vacuum cleaner in the hose connection opening while drilling. After the hole is drilled check the inside of the tank that it is free of metal parts. Then install sensor in this position.



15. This step should be performed with the help of an assistant.

Now install the intercooler , enter the included M8x20 screws from the backside of the bracket into the intercooler on both sides.

Also enter the included M5x10 screws into the smaller lower intercooler brackets.



16. This step should be performed with the help of an assistant.

To make sure the two large top brackets supports most of the intercoolers weight. Push the intercooler upwards while tightening the M8 and M10 screws and nuts.

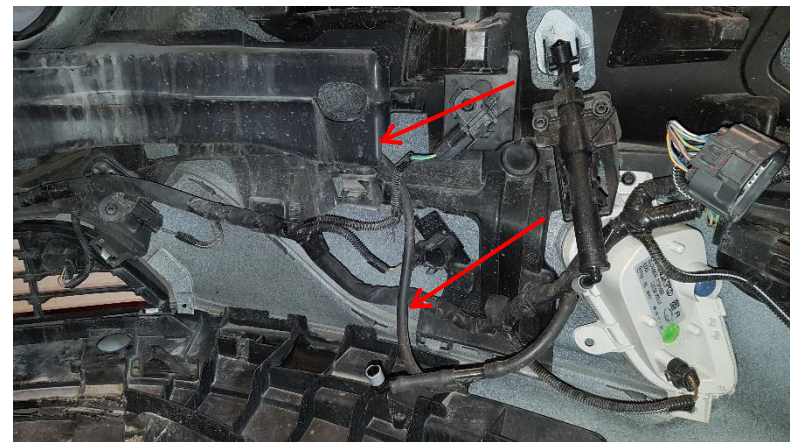
Inspect the two small bottom brackets that attach to the radiator, if they look stressed /bent (supports weight) then loosen all screws/nuts again and trim of the three plastic tabs from the air guide which is between the crash bar and intercooler top. This should give you the extra space needed to solve this problem.



- 17.** On MY 2015- models now install the included silicone hoses. On MY 2013-2015 connect the OEM hoses. Also connect wiring to the sensor on the intercooler if you car has this.



- 18.** On the inside of the bumper on the left side, disconnect the hose for the headlight washer. Pull the hose free all the way to the right side Y-connection. Reroute the hose behind the wiring loom and into the plastic channel. Reconnect the hose on the left side again.



19. Grind down the plastic channel which the headlight washer hose was routed in. This is needed to make space for the larger intercooler.

Grind the channel flat in the marked area.



20. Push the wiring loom upwards as much as possible so it won't interfere with the intercoolers air guide.



21. Install the included sealing on the top section of the intercooler air guide.



22. Install all other parts in reverse order. Note. If the plastic cover underneath the bumper is pushed down a bit due to the new intercooler. Slowly heat the marked area with a heating gun to "reshape" the plastic while installing the three clips.

